









**Term:** SHORT TERM LICENCE : 5 MONTHS (JAN -MAY)  
Fully furnished – Licence Agreement

**Bedrooms – 5**

### Key Features:

SHORT TERM LICENCE: 5 MONTHS (JAN – MAY)  
Open Plan Kitchen / Living Space with AGA  
Utility Room / Cloakroom  
Dining / Sitting Room with Log Burner  
Five Bedrooms  
Family Bathroom  
Outside 'Wet Area' with Shower and Bath  
Games Room  
Deck with Far Reaching Sea Views and Garden

### Description:

This beautifully finished beach front property features a sitting room with log burner, fully fitted kitchen with an AGA and a separate formal dining area.

The bedrooms surround the living areas, there are five bedrooms in total; three doubles, a twin room and an additional room fitted with bunk beds.

There is a family bathroom with a roll top bath and a separate W/C.

### Outside:

Outside there is a lovely decked sitting out area with uninterrupted sea views. The property also benefits from a large brick built barbeque area and an outside shower and bath.

### Situation:

Situated on the beach front, the property is a mere ten minute walk from East Wittering with its numerous eateries and shops. The Witterings are renowned for sandy beaches, watersports and great walking/cycling/riding routes.

The popular city of Chichester is just over eight miles away and the Goodwood and Cowdray Estates are within easy reach.

**AVAILABLE BEGINNING OF JANUARY UNTIL END OF MAY**

**White Goods:** All included

**Heating:** Included

**Water and Drainage:** Included

**Curtains:** To principal rooms

**Flooring:** Exposed Wood Floors

**Broadband availability:** Check with your provider

**Mobile phone reception:** Check with your provider

**Pets:** Considered



### Viewing:

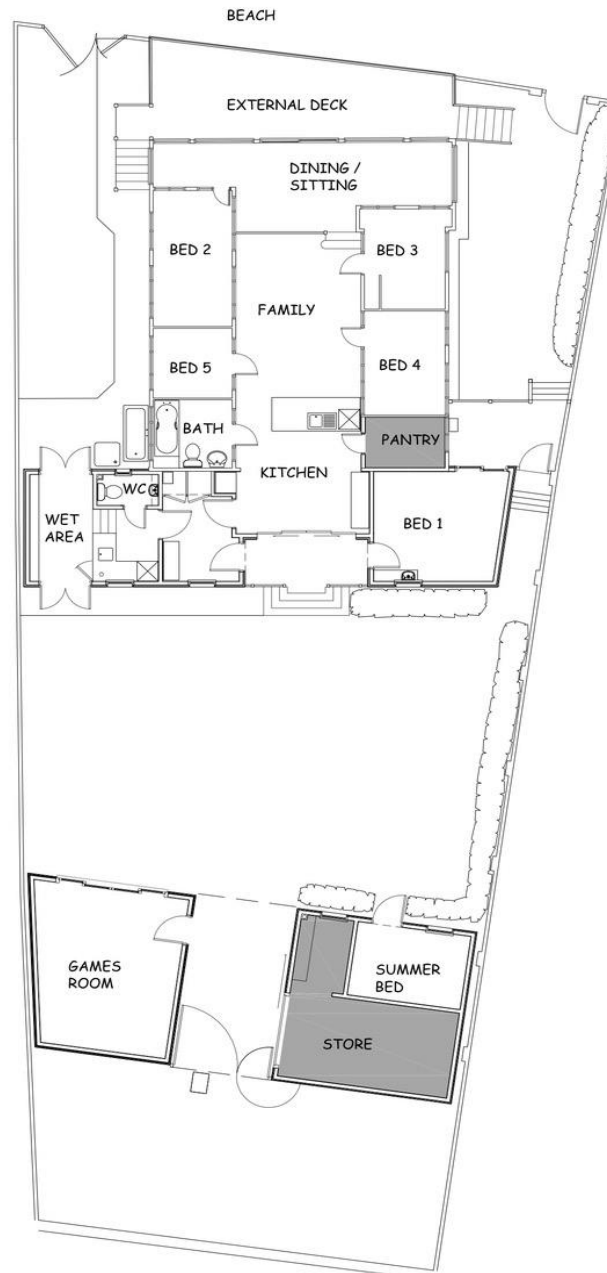
Strictly by appointment with The Country House Company, as many properties are already tenanted and we wish to respect privacy.

Tel: 02392 632275

Email: [info@countryhousecompany.co.uk](mailto:info@countryhousecompany.co.uk)

Please contact The Country House Company for further details – [www.countryhousecompany.co.uk](http://www.countryhousecompany.co.uk)







## The Country House Company

02392 632 275 [www.countryhousecompany.co.uk](http://www.countryhousecompany.co.uk)

[sales@countryhousecompany.co.uk](mailto:sales@countryhousecompany.co.uk) ▪ [lettings@countryhousecompany.co.uk](mailto:lettings@countryhousecompany.co.uk)

The Country House Company regulated by RICS. S.P. Crossley MRICS FARLA, R.N. Crossley



[www.countryhousecompany.co.uk](http://www.countryhousecompany.co.uk)