



Newton Valance, Nr Selbourne / Petersfield / Alton, Hampshire
£2,750 pcm excl

Detached four-bedroom Farmhouse with stunning views set in extensive grounds

Term: 12 months with the possibility of renewal
Unfurnished – Assured Shorthold Tenancy / Contractual Residential Tenancy

Bedrooms – 4

Key Features:

FULL RENOVATION UNDERWAY

Large Kitchen and Separate Dining Room
Utility Room/Boot Room
Sitting Room
Study
Cloakroom/W.C.
Four Double Bedrooms (Two En Suite)
Family Bathroom
Double Garage
Garden and Parking

Description:

This light and spacious farmhouse is set in glorious countryside with uninterrupted views on all sides. The property is undergoing a full renovation and will offer good family accommodation with newly fitted bathrooms throughout.

Re-carpeted and freshly painted throughout, this property offers versatile and extremely generous living space.

The garden, mostly laid to lawn, wraps around the property which is accessed via the tree-lined driveway.

Situation:

Part of a rural estate, the property is situated within the South Downs National Park, approximately 2 miles from Selbourne village with its Post Office, Pub and attractions.

It is approximately 7 miles from Petersfield and 5 miles from Alton with their mainline stations and local amenities.

AVAILABLE END AUGUST 2020

Local Authority: East Hampshire District Council (Band F)
White Goods: Space and infrastructure for all white goods
Heating: Oil fired
Drainage: Private
Broadband availability: Check with your provider
Mobile phone reception: Check with your provider
Pets: Dogs considered, sorry no cats
Gardening: Landlord responsibility to seasonally maintain hedges

Viewing:

Strictly by appointment with The Country House Company, as many properties are already tenanted and we wish to respect privacy.

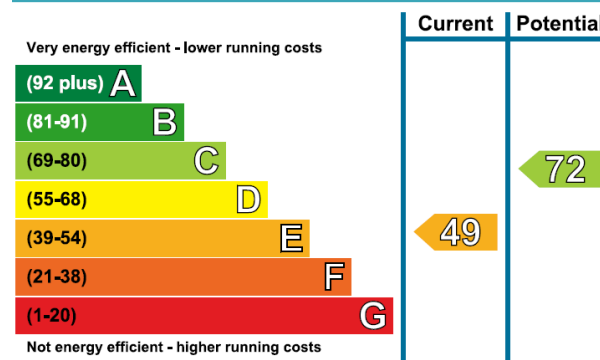
Tel: 02392 632275

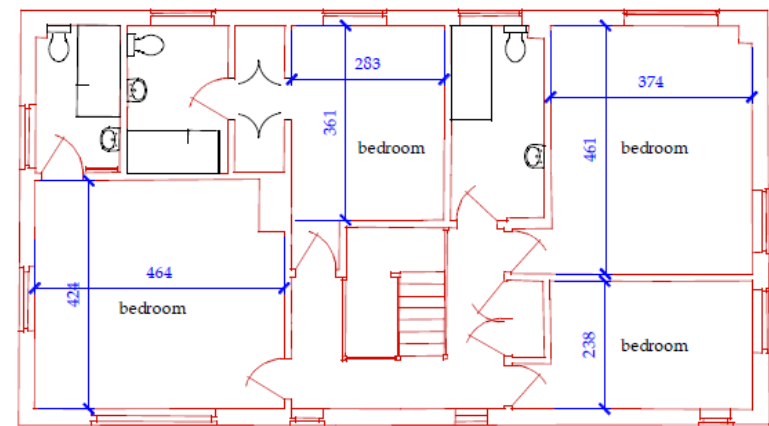
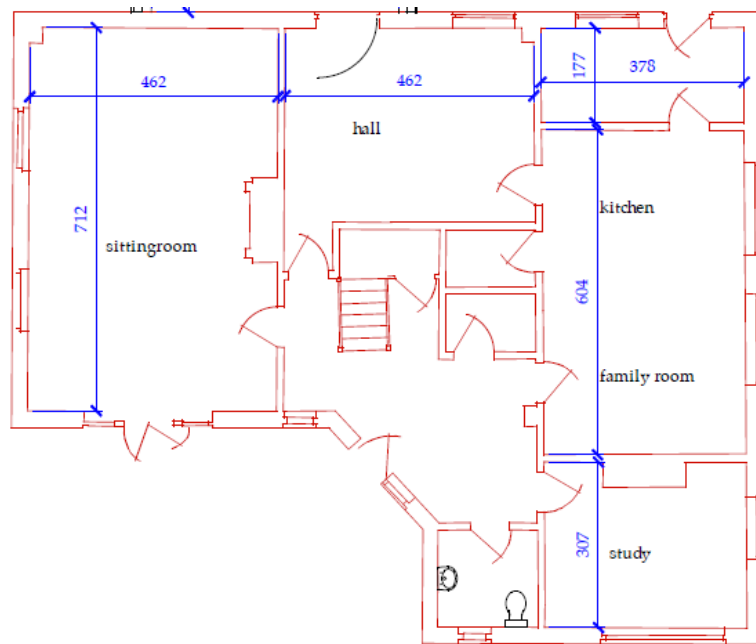
Email: info@countryhousecompany.co.uk

Please contact The Country House Company for further details – www.countryhousecompany.co.uk



Energy Efficiency Rating







The Country House Company

02392 632 275 www.countryhousecompany.co.uk

sales@countryhousecompany.co.uk ▪ lettings@countryhousecompany.co.uk

The Country House Company regulated by RICS. S.P. Crossley MRICS FARLA, R.N. Crossley



www.countryhousecompany.co.uk