



Rural Park Setting in Herriard, near Basingstoke, Hampshire  
£1,000 pcm inclusive of Council Tax and utilities

A high specification, one bedroom furnished apartment in a beautiful country park setting



**Term:** 12 Months with possibility of renewal **Bedrooms – 1**  
**Furnished – Assured Shorthold Tenancy / Contractual Residential Tenancy**

### Key Features:

Entrance Hall  
 Open Landing  
 Kitchen/Dining/Sitting Room  
 Double bedroom with Storage  
 Bathroom with Shower Over Bath  
 Parking Available  
 Views over Estate Parkland  
 Utilities included

### Description:

This beautifully furnished one-bedroom apartment is situated in a beautiful country park which is in easy reach of Basingstoke and commuting links.

The apartment is accessed via a private entrance which leads to the first-floor accommodation. It has an open plan kitchen/dining/sitting room, a double bedroom (with hanging storage and cupboard) and a bathroom with shower over bath.

### Outside:

There is parking available alongside, with great views over the country estate parkland and access to beautiful Park and Countryside walks.

### Situation:

The town of Basingstoke and the M3 (jct 7) are 5 miles, Alton is 8 miles and Winchester is some 15 miles, all with main line stations to London Waterloo. Trains from Basingstoke to Waterloo are frequent (40-45mins) with a good late-night service. The market town of Alresford is 10 miles (all distances are approximate).

**AVAILABLE MID FEBRUARY 2021**

**White Goods:** Electric hob and oven, fridge, freezer, washing machine and tumble dryer

**Utilities:** Council Tax and all utility costs included

**Heating:** Oil fired

**Broadband:** Fibre Optic Broadband installed

**Not suitable for pets or children**

### Viewing:

Strictly by appointment with The Country House Company, as many properties are already tenanted and we wish to respect their privacy.

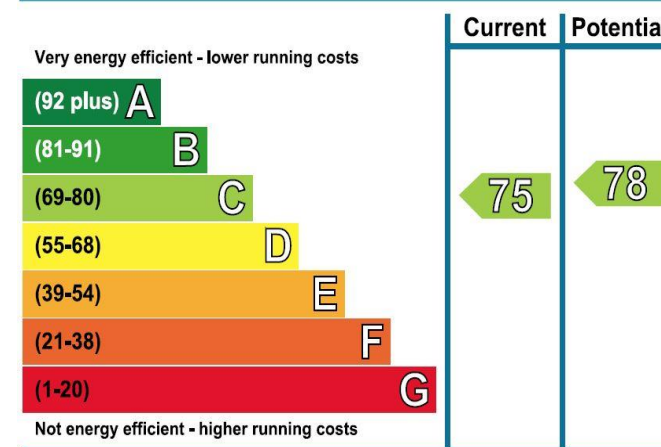
Tel: 02392 632275

Email: [info@countryhousecompany.co.uk](mailto:info@countryhousecompany.co.uk)

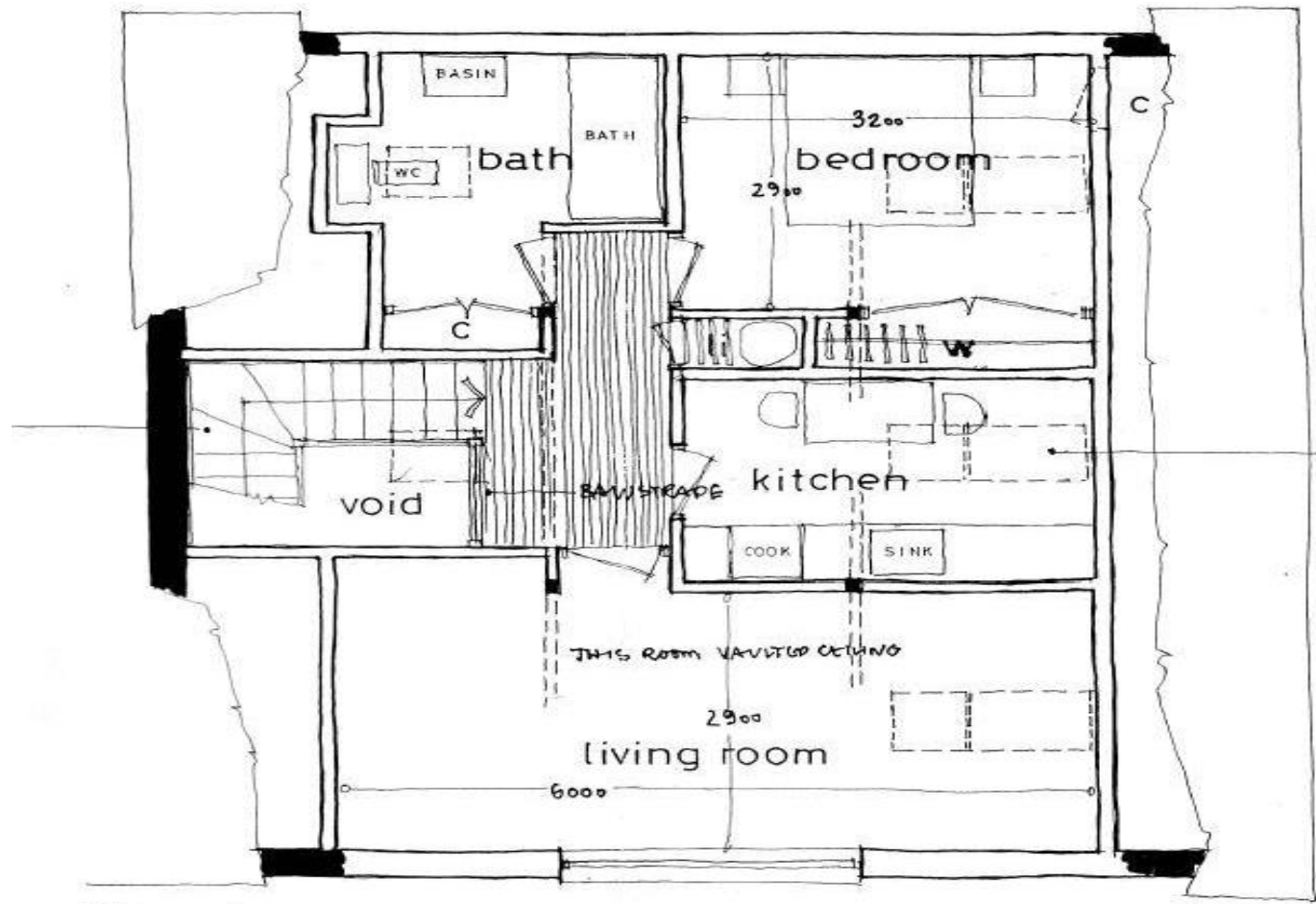
Please contact The Country House Company for further details [www.countryhousecompany.co.uk](http://www.countryhousecompany.co.uk)



### Energy Efficiency Rating



**Full EPC available on request**  
**See our Website for Disclaimer Details**



**The Country House Company**

02392 632 275 [www.countryhousecompany.co.uk](http://www.countryhousecompany.co.uk)

[sales@countryhousecompany.co.uk](mailto:sales@countryhousecompany.co.uk) • [lettings@countryhousecompany.co.uk](mailto:lettings@countryhousecompany.co.uk)

The Country House Company regulated by RICS. S.P. Crossley MRICS FARLA, R.N. Crossley



[www.countryhousecompany.co.uk](http://www.countryhousecompany.co.uk)