

NEWS

Property Sales | Lettings | Management

Houses, homes and opportunities...

The New Year starts on an exciting note with new properties available to buy and rent

Coming shortly to the sales market

West Meon - A stylish architect designed contemporary home tucked away in the centre of the village, offering approaching 3,000 sq. ft of accommodation and southerly facing landscaped gardens. Guide price £1,250,000.

Crawley, Nr Winchester - A charming Grade II listed four bedroom detached period cottage set at the heart of this sought-after Hampshire village on the outskirts of Winchester. Guide price £1,250,000.

Chilbolton, Test Valley - A light and spacious 4/5 bedroom detached property situated in Chilbolton, a thriving village in The Test Valley close to The Test Way and the village store and public house. Guide price £795,000.

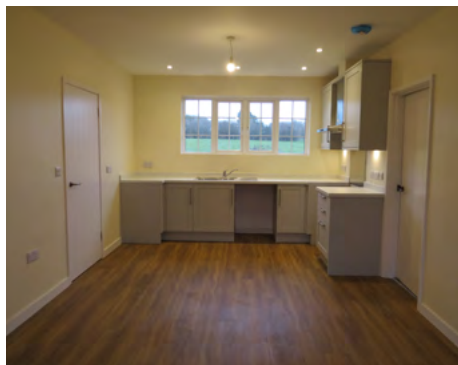
Coming shortly to let...

Horsham - A newly renovated and refurbished, stunning, 4/5 bedroom farmhouse with beautiful garden in an idyllic rural location near Horsham.

Empshott - A recently renovated 2/3 bedroom semi-detached home rural location with garden and lovely views in Empshott.

Nr Bramdean - A charming 3 bedroom cottage with large garden in an idyllic rural location near Bramdean.

For full details on these properties and others, please see www.countryhousecompany.co.uk or call the office on 02392 632 275



Supporting the national Greening Campaign for our regions

'Greening the Country, Community by Community'

During 2022 The Country House Company is supporting The Greening Campaign. This national campaign started in Petersfield and was designed and established to give communities the tools to be more sustainable in the face of climate change. It is about communities and landscape and as the campaign headline states,

"If we each make small changes to be greener and cleaner, those changes will add up to make a healthy, richer happier future."

The Greening Campaign provides the structure, resources and guidance to help individual towns and villages join together and work as a community to engage in helping the Climate Crisis.

Working with the support of councils, towns and villages are encouraged to work together in order to;

- Identify 5 significant changes that households can make to their lifestyle.
- To work as a community to protect the local environment.
- Make a vision for a sustainable community working on sections such as carbon reduction, communication, retrofit, saving water.

Ecology packs are provided that will help to evaluate the risks climate change will bring to the community.

Further details on The Greening Campaign can be found at www.greening-campaign.org

THE COUNTRY HOUSE COMPANY

Sales | Lettings | Management

The market is moving, are you?

Open the conversation

Call for Property Sales | Lettings | Management advice
and let us open doors for you in 2022

The property experts you can trust



Kate Porter - Head of Sales
katep@countryhousecompany.co.uk



Claudia Hunt - Head of Lettings
claudia@countryhousecompany.co.uk



Marishelle Butler - Head of Management
marishelle@countryhousecompany.co.uk

02392 632 275

countryhousecompany.co.uk

