



Midhurst, Nr Petersfield / Chichester / Petworth, West Sussex  
£1,150 pcm excl.

Beautiful Fully Furnished One Bedroom Mews Cottage in the Historic  
Heart of Midhurst



**Term:** Twelve months with the possibility of renewal **Bedrooms – 1**  
**Fully Furnished – Assured Shorthold Tenancy / Contractual Residential Tenancy**

**Key Features:**

Beautifully Furnished Mews Cottage  
 Private Courtyard Setting  
 Fully Fitted Kitchen  
 Large Drawing Room  
 Drinks Cupboard/Pantry  
 Double Bedroom with Study Area  
 Bathroom  
 Storage

**Situation:**

Set just off The Square in Midhurst, with easy access to the Spread Eagle Hotel and Spa with swimming pool and club facilities. This property is favorably located in one of the oldest parts of Midhurst, mere minutes' walk from the town's High Street, which offers an abundance of boutique shops and cafes. Midhurst itself is a market town in the Chichester District of West Sussex. Cowdray Park is with its award winning Farm Shop, Events, Polo and Golf is within walking distance.

The nearby A3 enables easy access to the motorway network for nearby Guildford and Chichester with main line train stations and leisure facilities or beyond to London. Both Gatwick and Heathrow are less than an hour's travel away.

**AVAILABLE NOW**

**Local Authority:** (Band E) Chichester District Council

**White Goods:** Electric oven and hob, fridge, freezer, slimline dishwasher and washer/dryer

**Heating:** Mains Gas

**Water and Drainage:** Mains water and drainage

**Curtains:** To be left as seen

**Flooring:** Carpets

**Broadband availability:** Superfast (80Mbps)

**Mobile phone reception:** Check with your provider

**Pets:** Considered

**Gardening:** Tenant to be responsible for upkeep of the courtyard

**Viewing:**

Strictly by appointment with The Country House Company, as many properties are already tenanted and we wish to respect privacy.

Tel: 02392 632275

Email: [info@countryhousecompany.co.uk](mailto:info@countryhousecompany.co.uk)

Please contact The Country House Company for further details – [www.countryhousecompany.co.uk](http://www.countryhousecompany.co.uk)

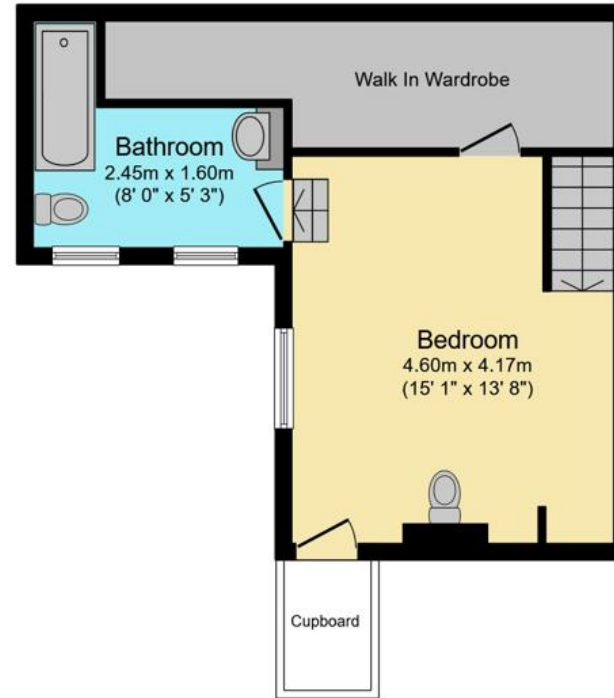


Score	Energy rating	Current	Potential
92+	A		
81-91	B		87   B
69-80	C		
55-68	D	61   D	
39-54	E		
21-38	F		
1-20	G		





**Ground Floor**



**First Floor**

Total floor area 69.8 sq.m. (751 sq.ft.) approx



**The Country House Company**

02392 632 275 [www.countryhousecompany.co.uk](http://www.countryhousecompany.co.uk)

[sales@countryhousecompany.co.uk](mailto:sales@countryhousecompany.co.uk) ▪ [lettings@countryhousecompany.co.uk](mailto:lettings@countryhousecompany.co.uk)

The Country House Company regulated by RICS. S.P. Crossley MRICS FARLA, R.N. Crossley

