



Hoe Road, Bishops Waltham, Nr Winchester / Southampton, Hampshire
£ 3,250 pcm excl., including gardening

Beautifully presented Georgian 5 bedroom Farmhouse



Term: 12 months with the possibility of renewal
Bedrooms – 5
Unfurnished – Assured Shorthold Tenancy / Contractual Residential Tenancy

Key Features:

Front Entrance Hall
Kitchen / Breakfast Room with Gas Fired AGA
Sitting Room with Fireplace
Study
Orangery
Laundry Room, W.C., Store Room
Cellar
5 Double Bedrooms (2 En Suite)
Family Bathroom
Underfloor Heating

Description:

This Georgian 5 bedroom farmhouse is beautifully presented showing contemporary flair, yet the property still maintains its traditional character and is eminently practical for family living. Featuring handcrafted limestone floors and plaster work, with top quality workmanship, fittings, fixtures, curtains and lights.

The property was renovated in 2009 to incorporate the annexe with limestone floors and underfloor heating, giving a wonderful light family room and two double bedrooms, both with en-suite wet rooms, on the ground floor.

This is now linked with the original house which has two well-proportioned reception rooms, a kitchen / breakfast room with gas fired AGA, laundry room, separate w.c. and cellar.

Upstairs there is a master bedroom with en suite, two further double bedrooms and a family bathroom.

Outside:

There is a good sized, enclosed, partly walled garden with sunny terraces and lawns and a mature backdrop with notable cherry and yew trees. The property also offers a gravelled parking area and a covered veranda which provides a perfect space for dry storage.

Situation:

The property is approached by a private road and located on the edge of the market town of Bishops Waltham.

Bishops Waltham is a very progressive and attractive hub of local activity with excellent specialist shops; butchers, greengrocers, bakers, supermarket, boutiques, banks, gift shops, restaurants and coffee bars.

There are good local schools and many private schools within close proximity.

AVAILABLE NOW

Local Authority: Winchester City Council (Band G)

White Goods: Gas fired AGA, induction hob, electric oven, dishwasher, washing machine, tumble dryer.

Heating: Mains gas central heating with some under-floor heating

Drainage: Mains drainage

Curtains: To principal rooms

Flooring: Limestone floors / carpets

Broadband availability: Check with provider

Mobile phone reception: Check with provider

Pets: Considered

Gardening: Included



Viewing:

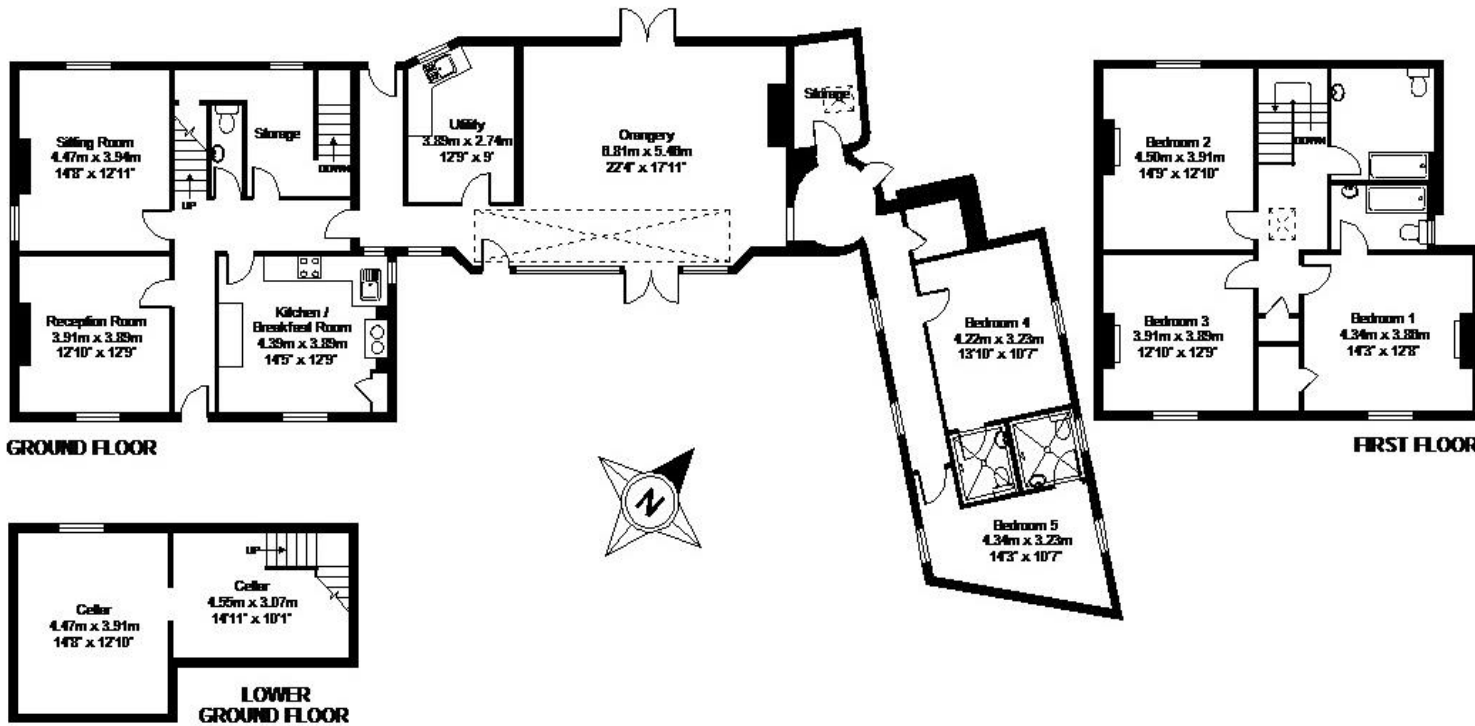
Strictly by appointment with The Country House Company, as many properties are already tenanted and we wish to respect privacy.

Tel: 02392 632275

Email: info@countryhousecompany.co.uk

Please contact The Country House Company for further details – www.countryhousecompany.co.uk





Hoe Road, Bishops Waltham, Southampton, Hampshire, SO32

APPROX. GROSS INTERNAL FLOOR AREA 3178 SQFT / 295.2 SQM

Whilst every attempt has been made to ensure the accuracy of the floor plans contained here, measurements of doors, windows and rooms are approximate and no responsibility is taken for any error, omission or mis-statement. These plans are for representation purposes only as defined by RICS Code of Measuring Practice and should be used as such by any prospective purchaser. The services, systems and appliances listed in this specification have not been tested by Hamptons and no guarantee as to their ongoing ability or their efficiency can be given.

Copyright nichecom.co.uk 2010 Produced for Hamptons REF : 00002





The Country House Company

02392 632 275 www.countryhousecompany.co.uk

sales@countryhousecompany.co.uk ▪ lettings@countryhousecompany.co.uk

The Country House Company regulated by RICS. S.P. Crossley MRICS FARLA, R.N. Crossley



www.countryhousecompany.co.uk