



Meonstoke, Nr Bishops Waltham / Winchester, Hampshire  
£950pcm inclusive of all bills (excluding metered electricity)

Stylish Annexe Flat in the Idyllic Village of Meonstoke  
**Single Occupancy**

THE  
**COUNTRY  
HOUSE**  
COMPANY  
Sales | Lettings | Management





**Term:** 12 months with the possibility of renewal  
Furnished – Assured Shorthold Tenancy / Contractual Residential Tenancy

**Bedrooms – 1**

**Key Features:**

Fully Furnished Annexe  
Picturesque South Downs Village  
Rural Views  
Large Open Plan Living / Dining / Kitchen Space  
One Double Bedroom  
Bathroom with Shower over Bath  
Off Road Parking  
Utilities and Council Tax Included (Excluding Metered Electricity)  
**Single Occupancy Only**

**Situation:**

Meonstoke is a popular village situated within the South Downs National Park. The village has a public house, church, children's play areas, skate park, tennis court, an outdoor gym, an active village hall and a local store with post office.

The area is ideal for leisure pursuits with nearby Corhampton Golf Club, footpaths, cycle paths and bridleways. Mainline services to London run from Petersfield and Winchester. The A3/M3/M27 motorways and the South Coast are all easily accessible.

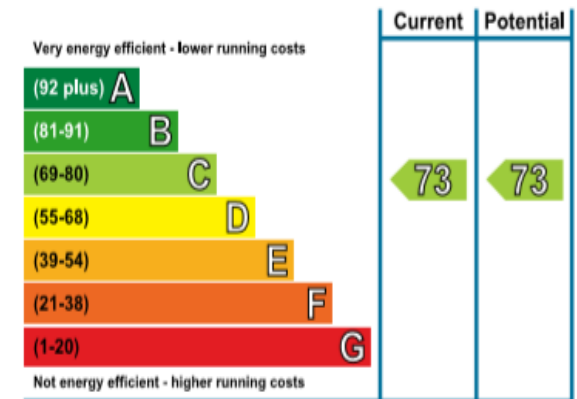
**AVAILABLE APRIL 2023**

**White Goods:** Electric Cooker and Hob, Microwave, Washing Machine  
**Curtains:** To principal rooms  
**Heating:** Electric radiators  
**Flooring:** Carpets/Exposed Wood Floors/Tiles  
**Broadband availability:** Check with your provider  
**Mobile phone reception:** Check with your provider  
**Pets:** Not suitable

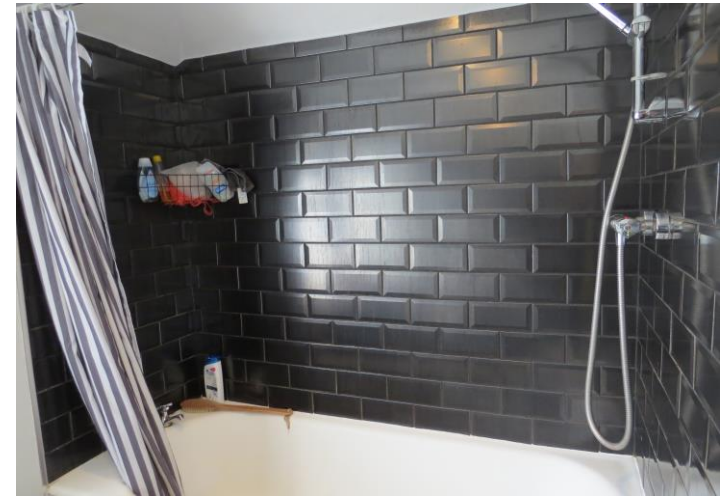
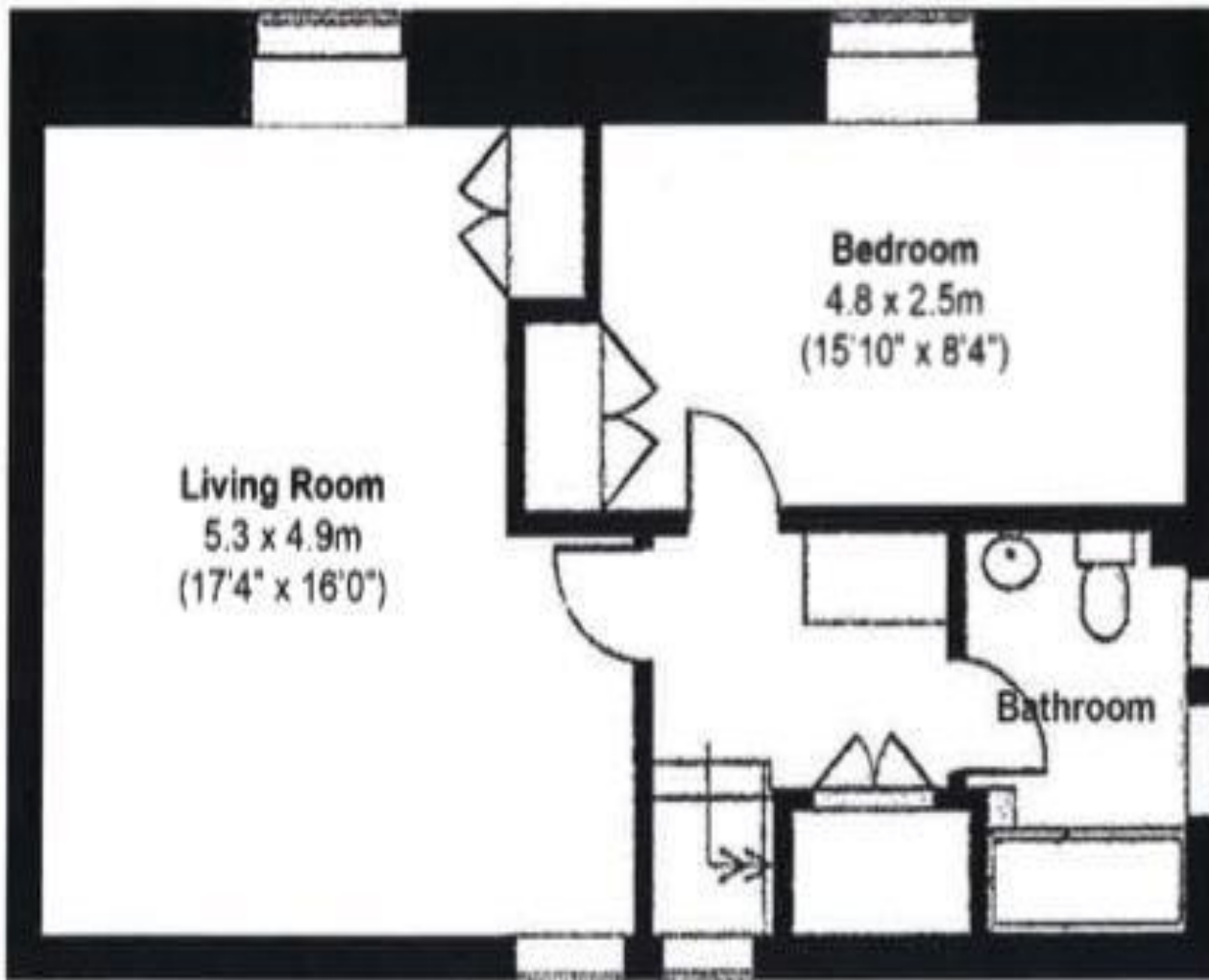
**Viewing:**

Strictly by appointment with The Country House Company, as many properties are already tenanted and we wish to respect privacy.  
Tel: 02392 632275  
Email: [info@countryhousecompany.co.uk](mailto:info@countryhousecompany.co.uk)

Please contact The Country House Company for further details – [www.countryhousecompany.co.uk](http://www.countryhousecompany.co.uk)







**The Country House Company**

02392 632 275 [www.countryhousecompany.co.uk](http://www.countryhousecompany.co.uk)

[sales@countryhousecompany.co.uk](mailto:sales@countryhousecompany.co.uk) ▪ [lettings@countryhousecompany.co.uk](mailto:lettings@countryhousecompany.co.uk)

The Country House Company regulated by RICS. S.P. Crossley MRICS FARLA, R.N. Crossley

